

4. Trail Alignment and Improvement Plan

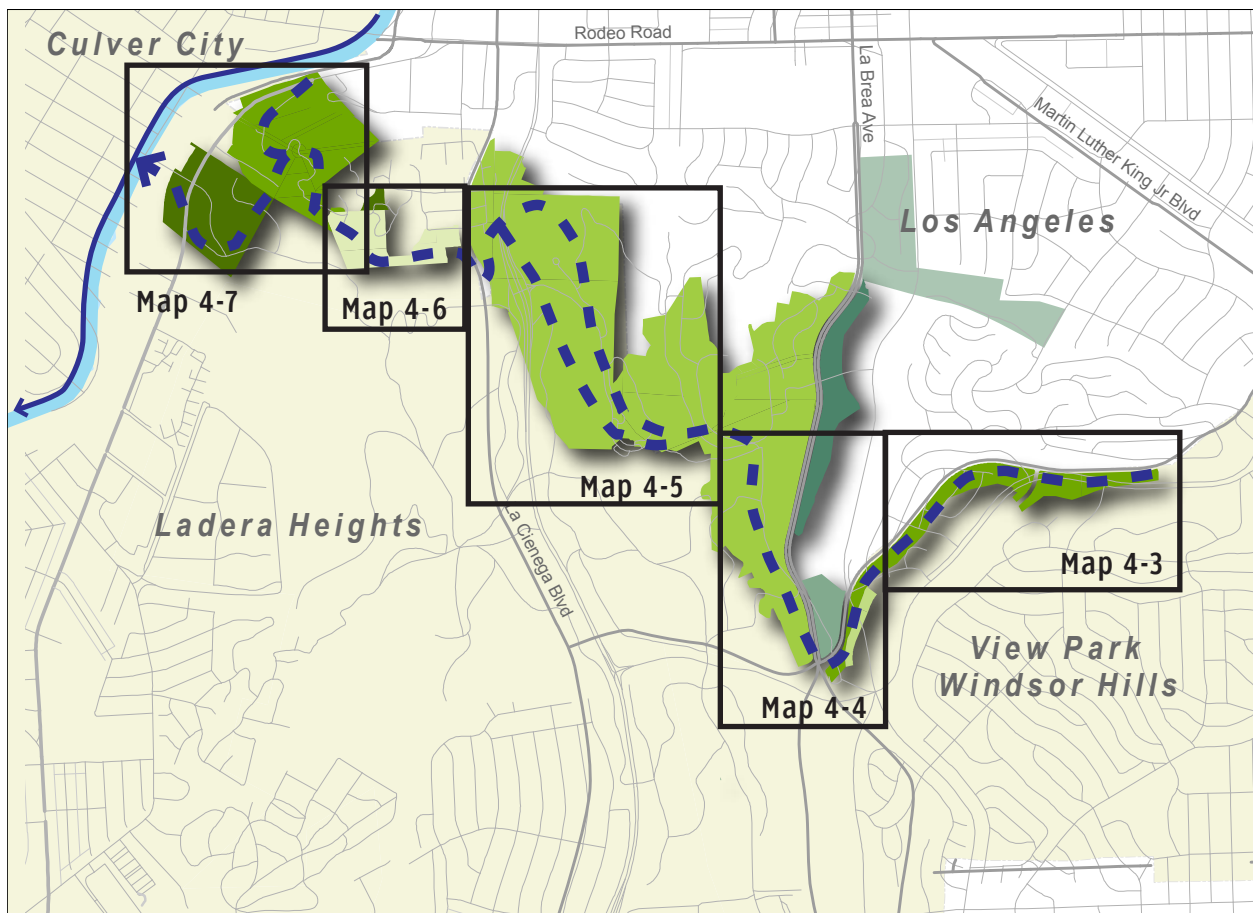


The Park to Playa Trail will traverse the ridgelines and valleys of the coastal sage scrub within the Baldwin Hills

This page intentionally left blank

4.1 Introduction

This chapter identifies and describes recommended connections and improvements to the Park to Playa Trail on a segment-by-segment basis, moving generally East to West. The Opportunities and Constraints section in Chapter 2 describes the existing conditions in detail. The Design Guidelines, in Chapter 4 show the features of the trail improvements and amenities. Chapter 5 describes improvements to signage and wayfinding. The majority of the proposed segments are near-term recommendations for implementation. However, some proposed elements are longer-term recommendations, and have been labeled as such in this chapter. Please see Chapter 6 for additional information regarding trail implementation.



Park to Playa Segment Key Map