

WORKPROGRAM PRIORITIES

Since the Conservancy adopted its Land Acquisition Workprogram and its Improvement and Development Project Workprogram in 2000 and 2001, respectively, the evaluation criteria for both documents have been emulated and lauded within the State Resources Agency. These criteria demonstrate a viable means of quantifying a diverse set of project attributes to produce a priority ranking list. This list has served the Conservancy well in its allocation of bond funds. Of the top 25 ranked acquisition projects, the Conservancy, the Department of Parks and Recreation, and other agencies have acquired 16 of them, bringing more than 9,000 acres into public ownership.

Workprogram projects are grouped in the following planning areas that are depicted on the following maps. These maps provide the name and location of every project on the Acquisition Workprogram.

Workprogram projects are grouped by planning area:

- Urban/River
- Simi Hills
- Western Rim of the Valley - WROV
- Eastern Rim of the Valley - EROV
- Western Santa Monica Mountains - WSMM
- Eastern Santa Monica Mountains - ESMM

URBAN/RIVER

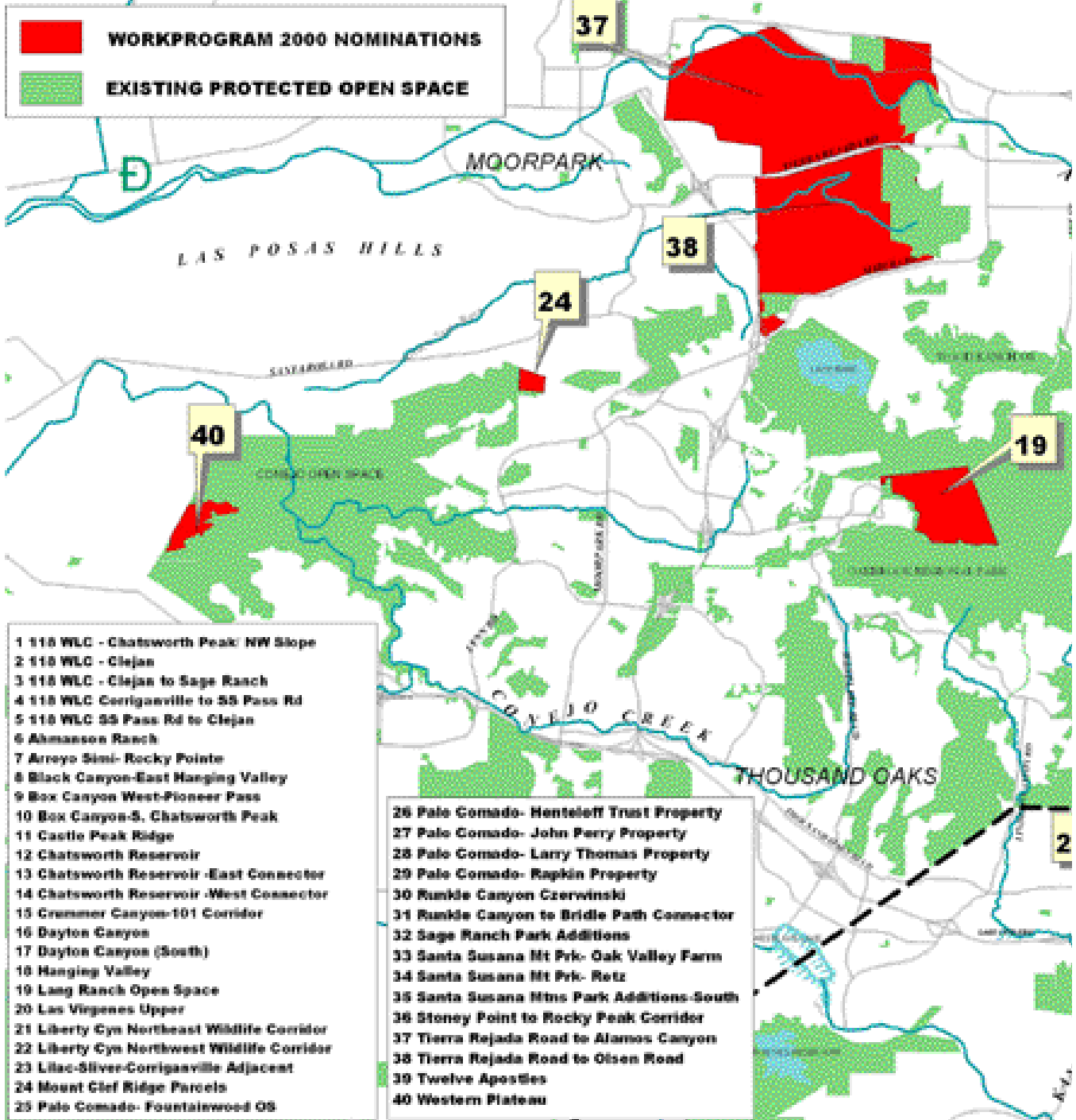




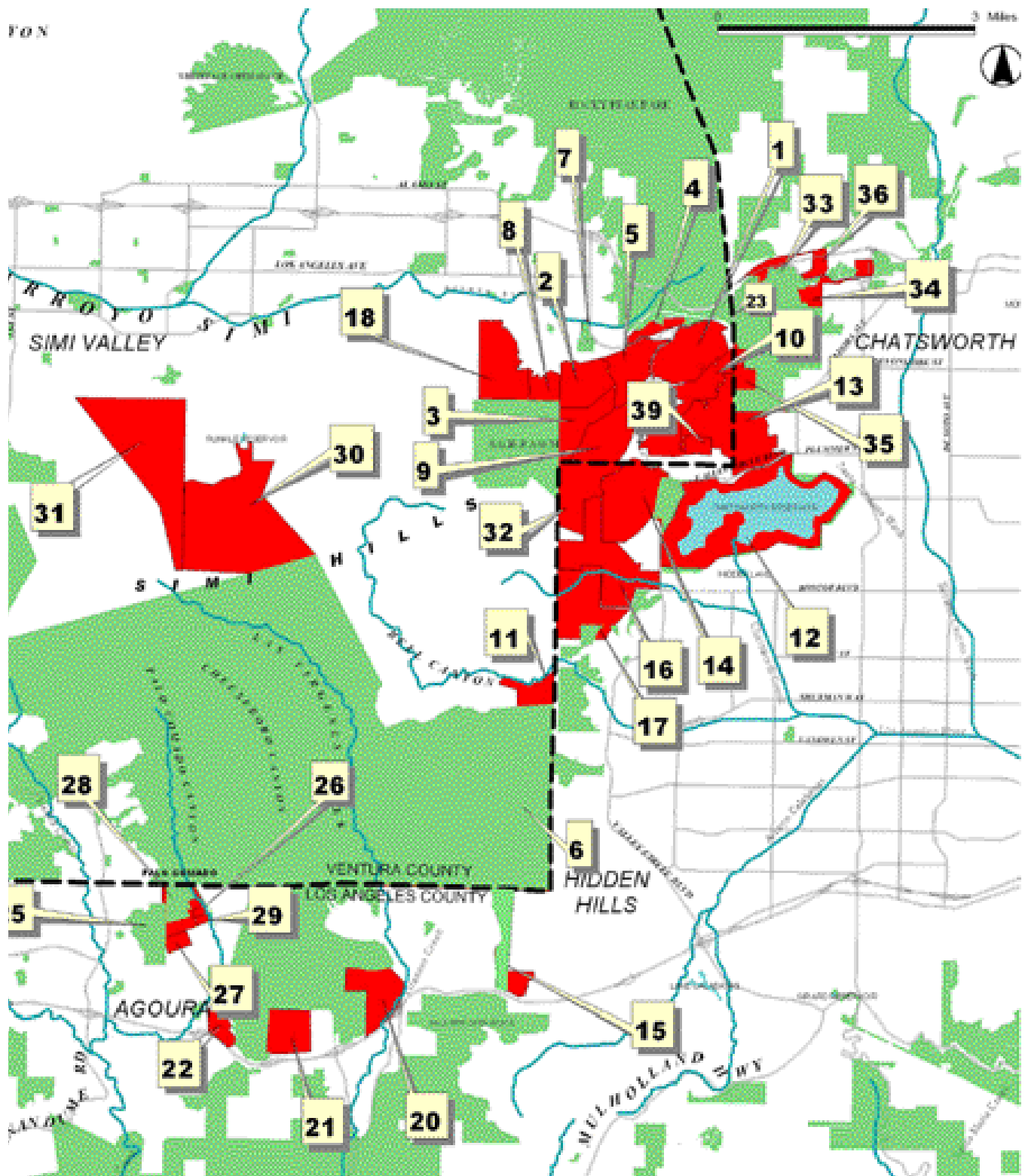
SIMI HILLS

**SIMI HILLS
WORKPROGRAM 2000 NOMINATIONS**

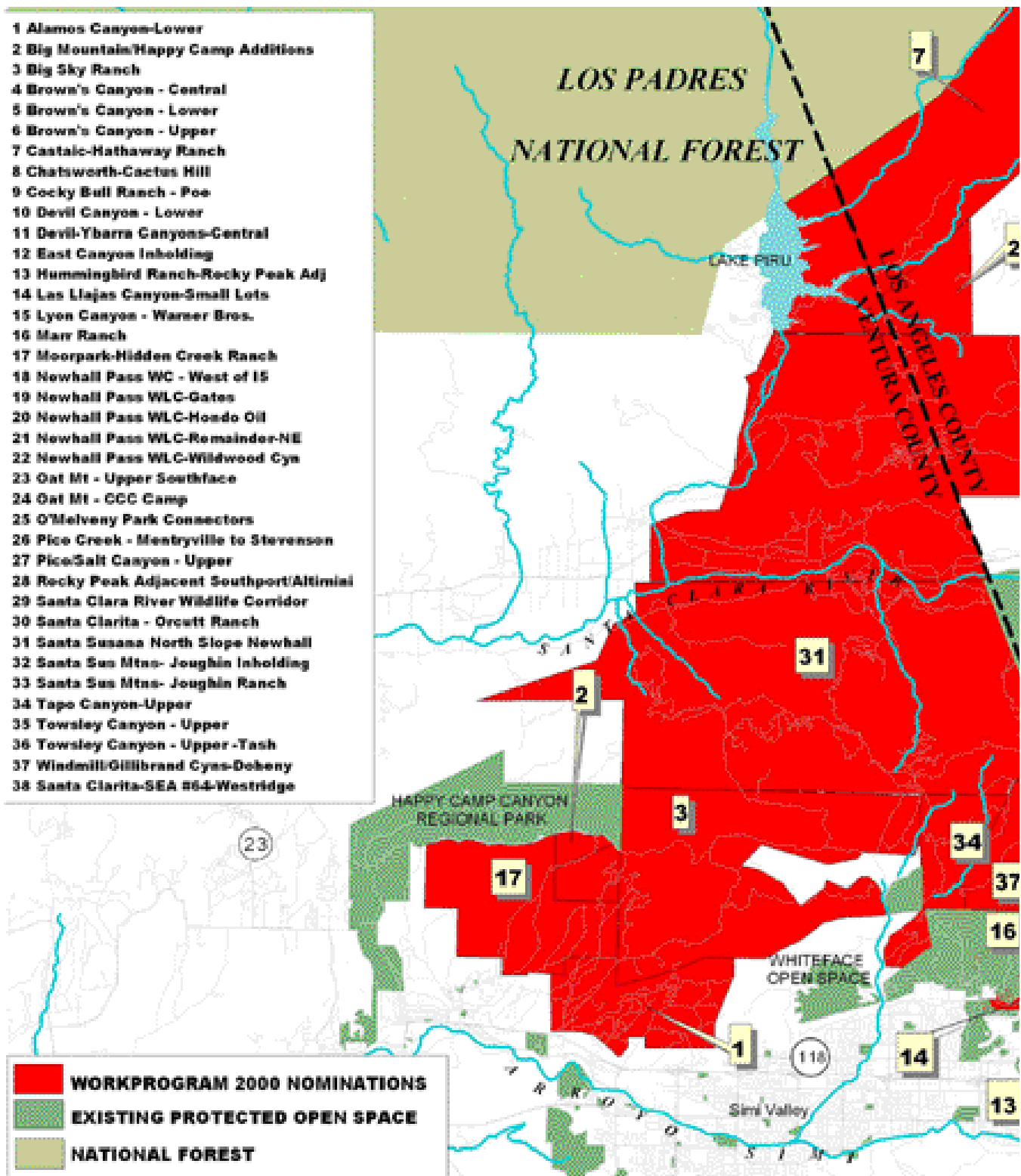
ALAMOS CANYON



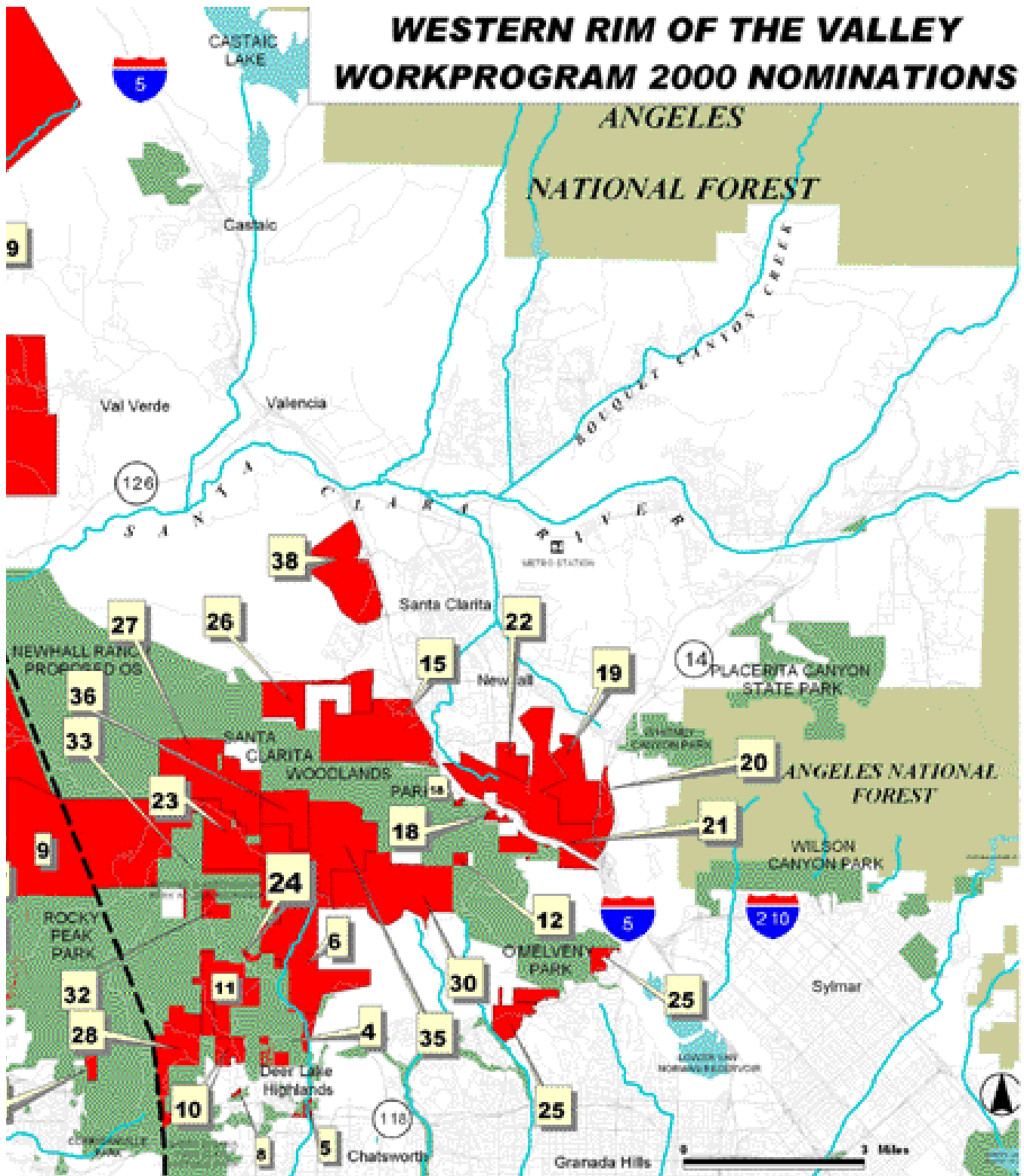
SIMI HILLS



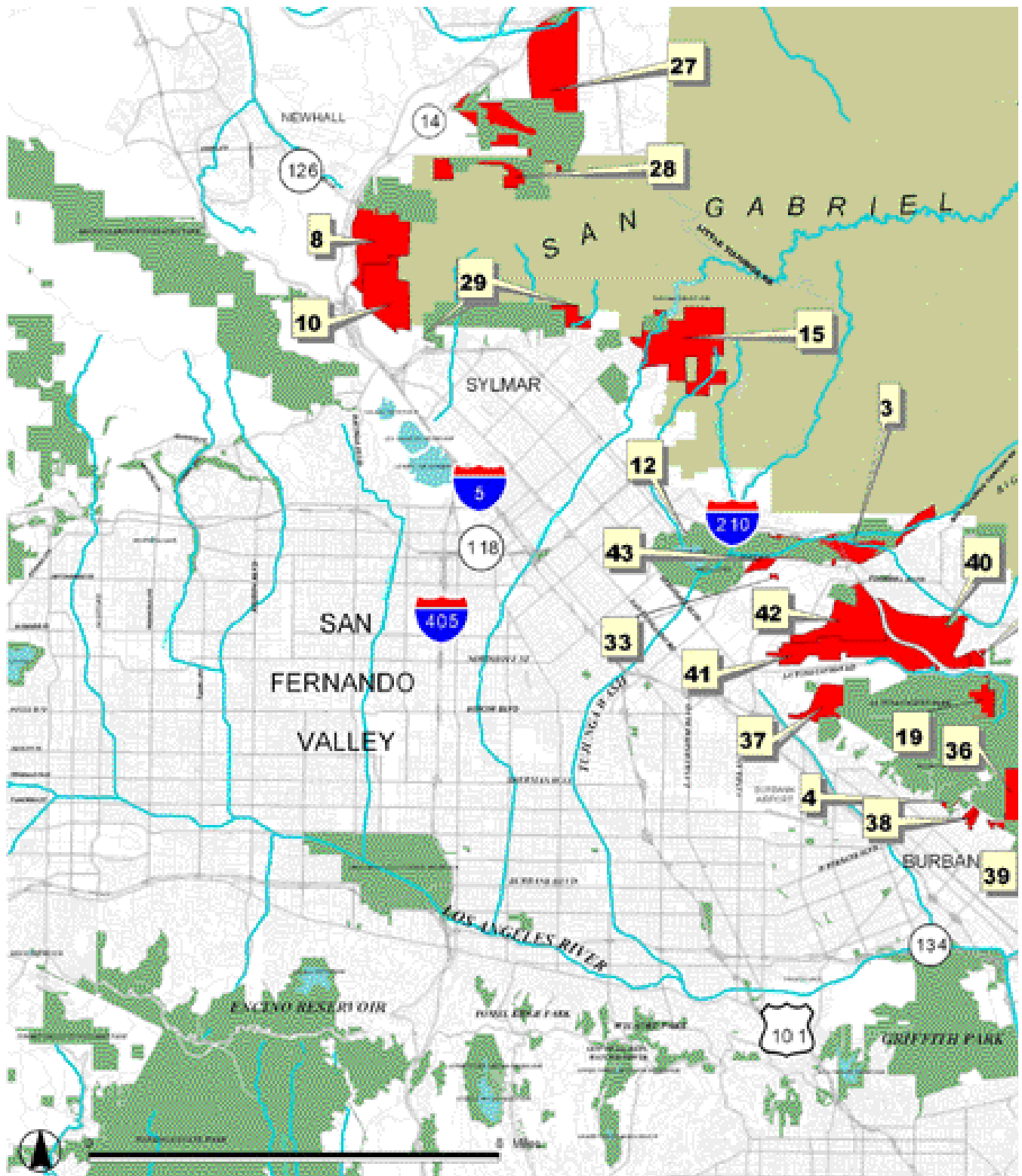
WESTERN RIM OF THE VALLEY



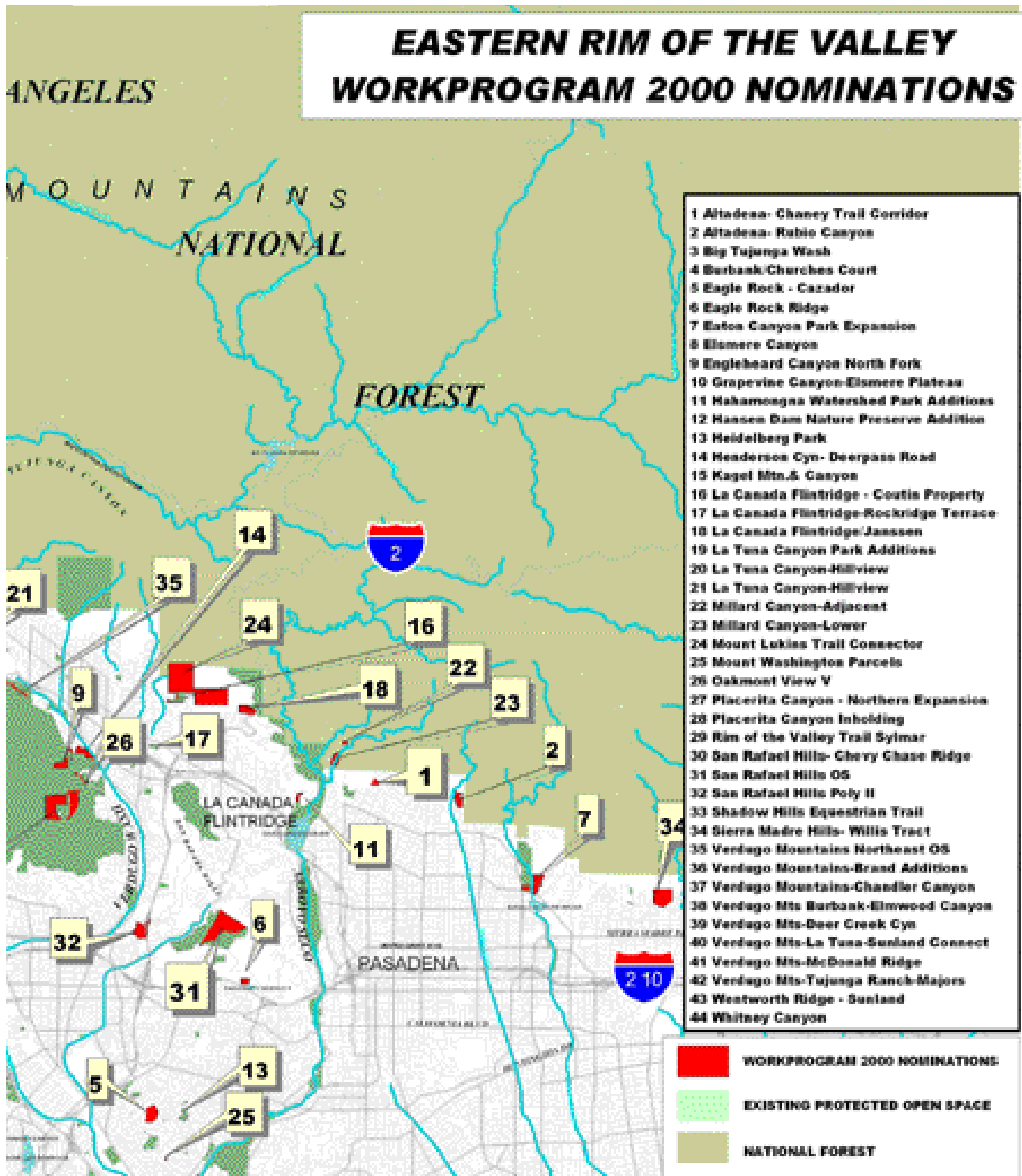
WESTERN RIM OF THE VALLEY



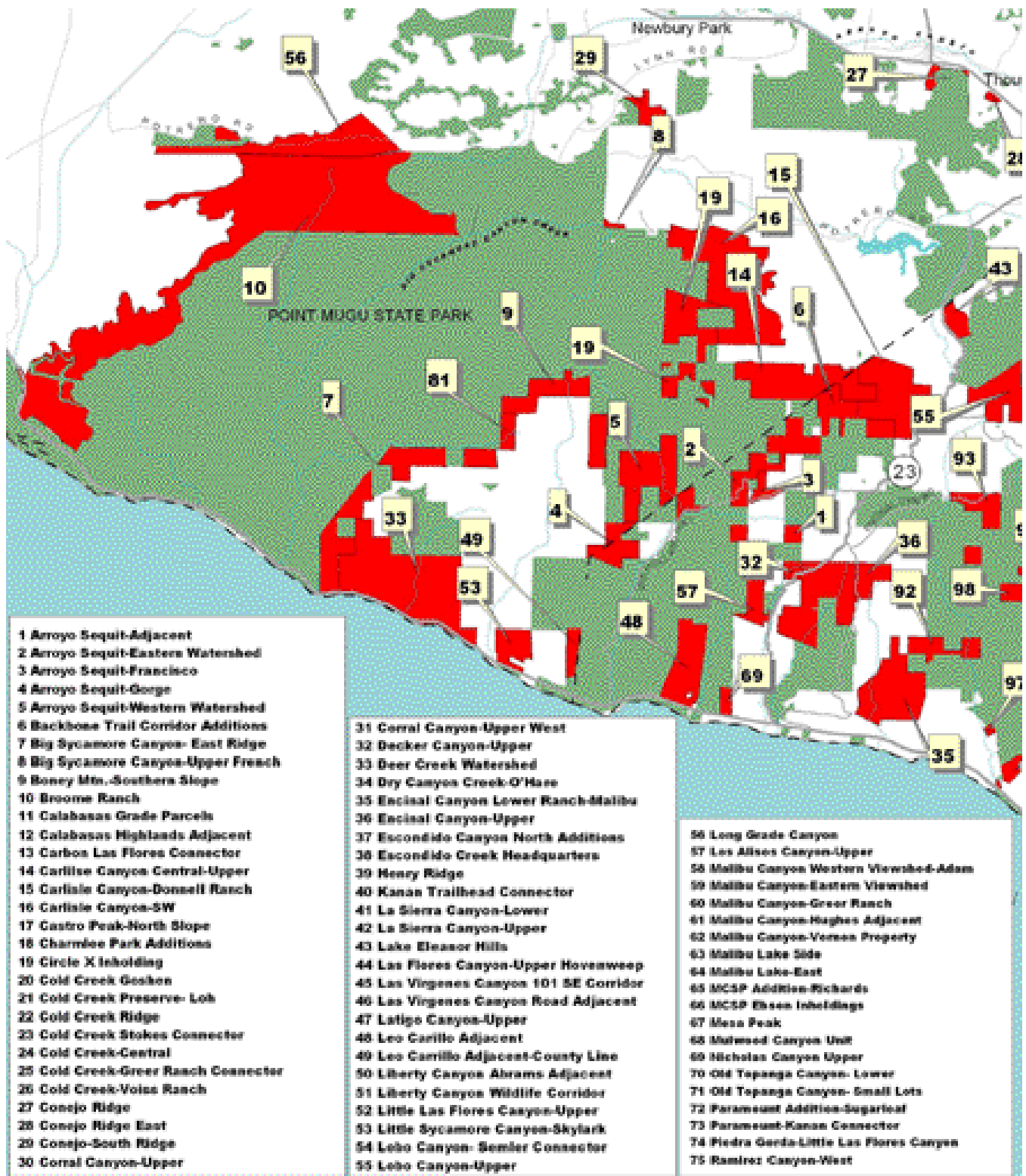
EASTERN RIM OF THE VALLEY



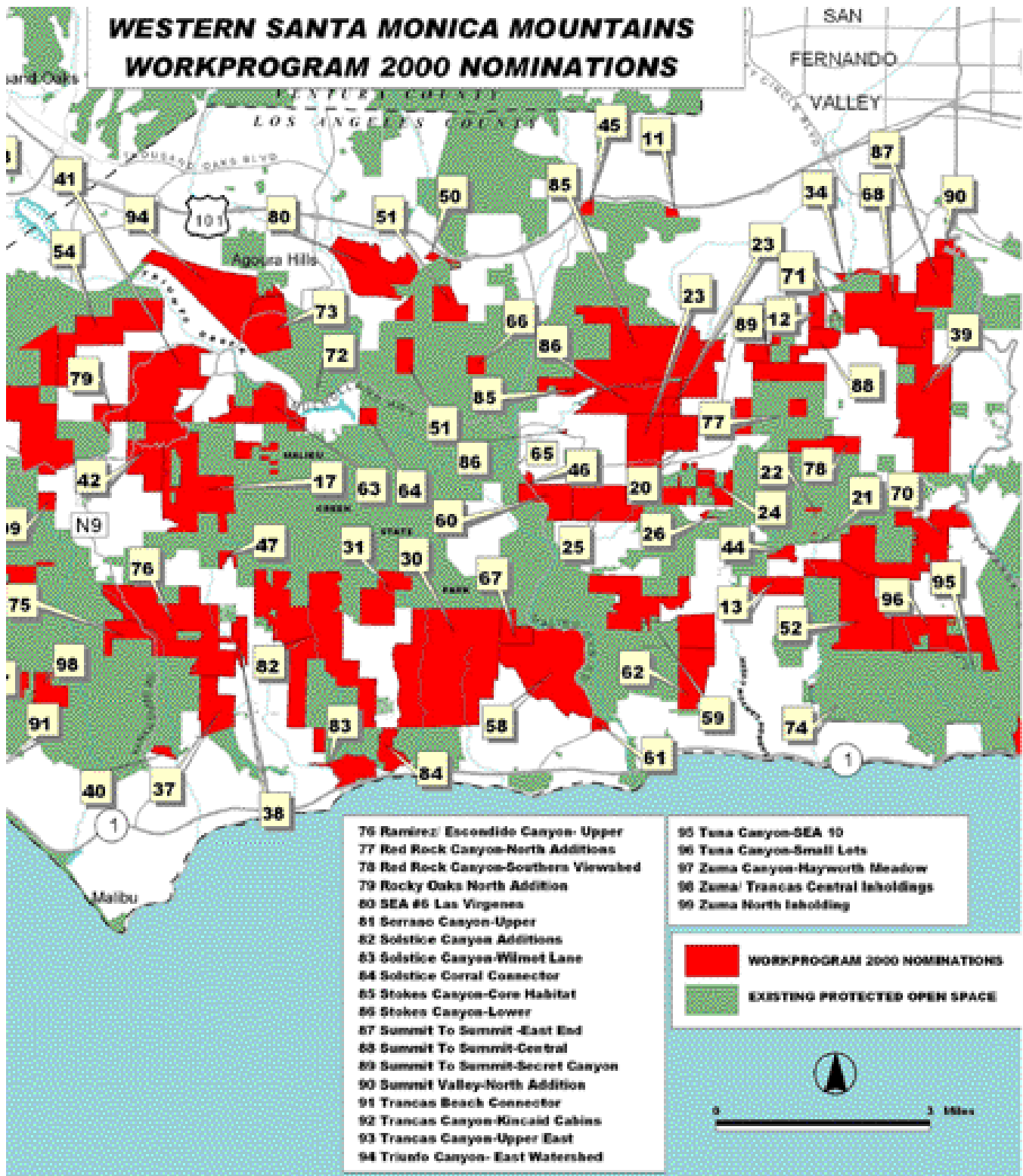
EASTERN RIM OF THE VALLEY



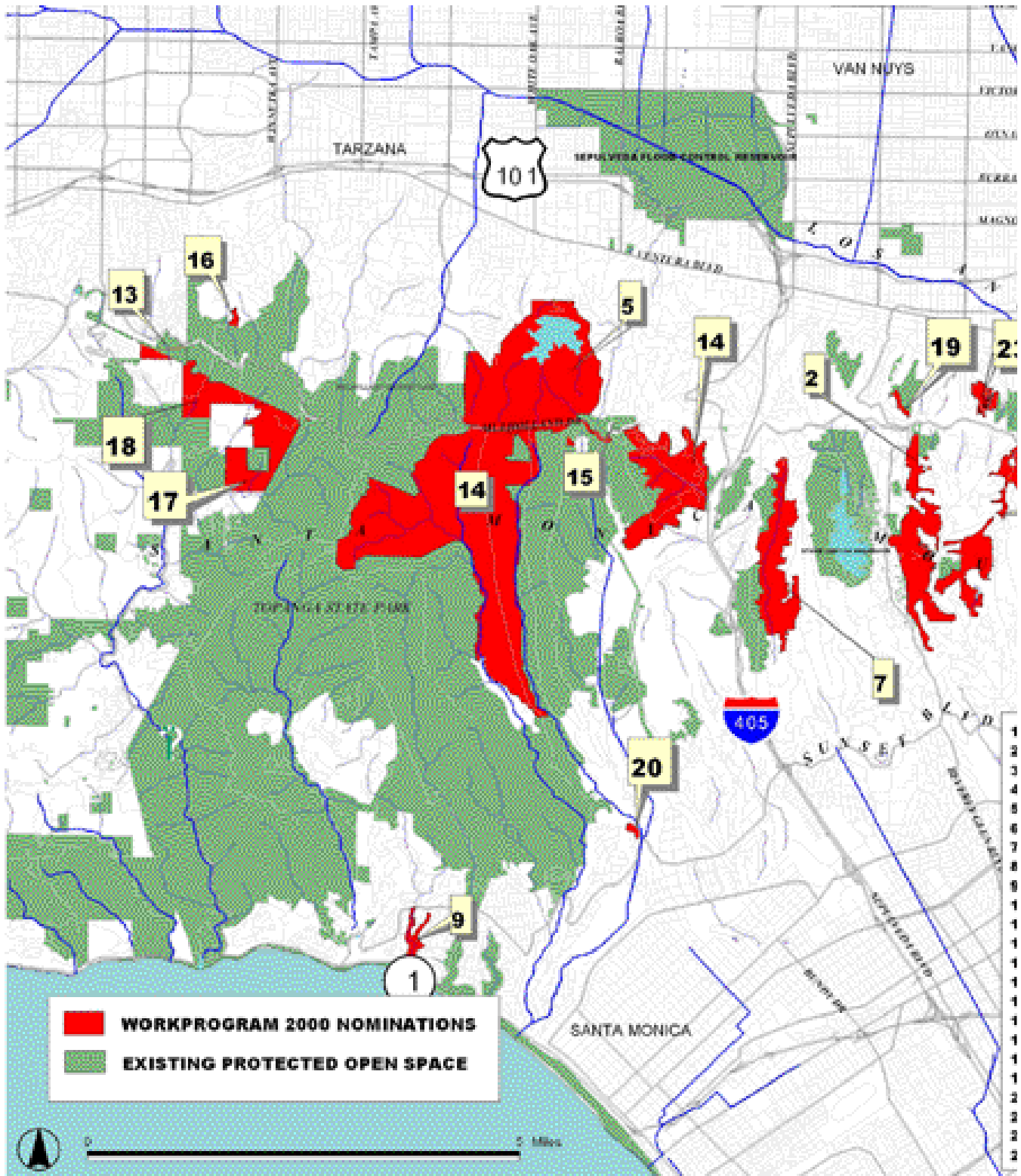
WESTERN SANTA MONICA MOUNTAINS



WESTERN SANTA MONICA MOUNTAINS



EASTERN SANTA MONICA MOUNTAINS



EASTERN SANTA MONICA MOUNTAINS

